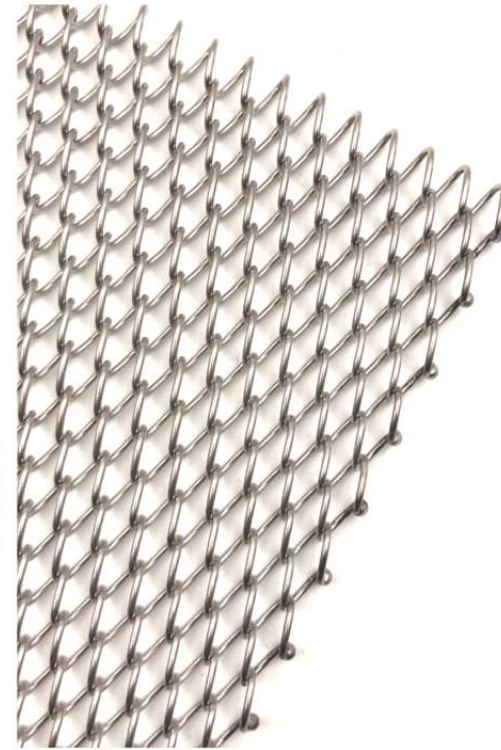


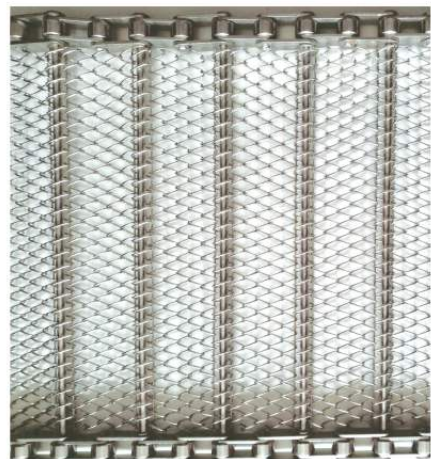
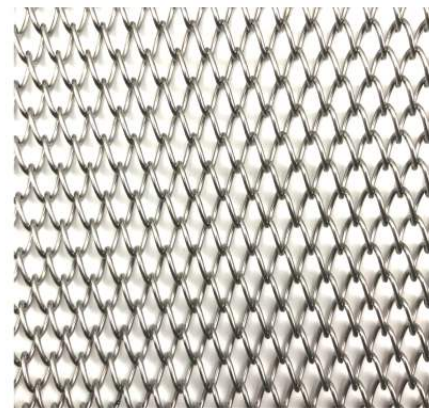
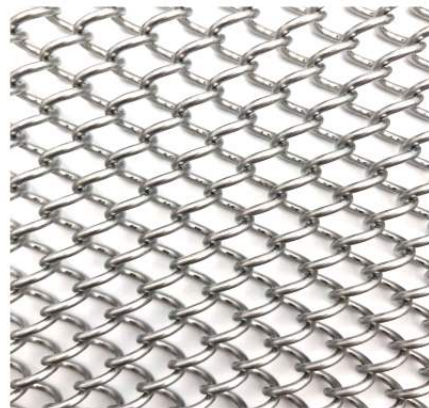
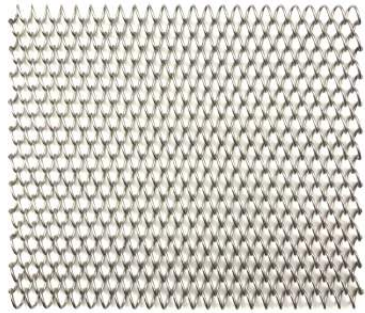
Conventional Weave Belt 菱形网

菱形网带是指网带的成型方式为编织网带式，成规则的菱形状，因此叫做菱形网带。菱形网带的特点是灵活性好，运行平稳，网孔大，透气性好，便于清洗，安装，维修，拆卸。菱形网带主要用于食品生产线，电子产品输送线。

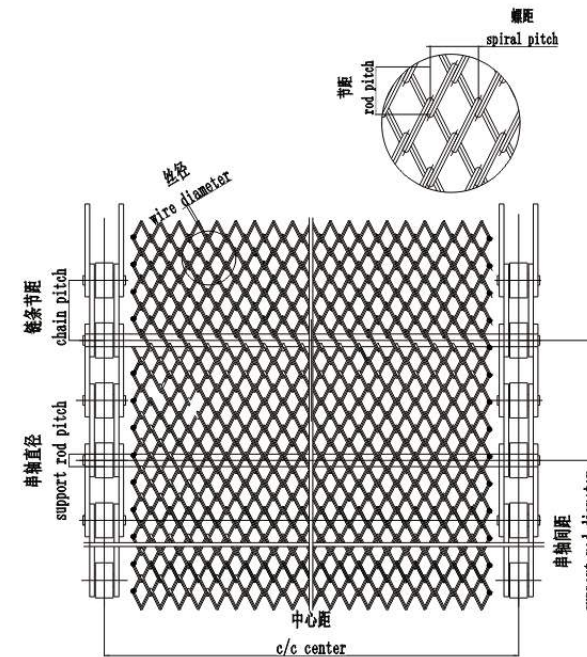
Conventional weave belt is consists of single directional spirals interwoven into the preceding spirals. The advantages of the mesh are as follows: flexibility, smooth running, large opening, good air circulation, easy installation, maintain and repair, Frequently used for food processing and electronic conveying etc.



产品细节 / Product Image



产品参数 / PRODUCT PARAMETERS



材质 Material 碳钢, 201不锈钢, 304不锈钢, 316 不锈钢
Carbon steel, SUS201, SUS304, SUS316

丝径 (毫米) Wire diameter (mm) 1.2, 1.4, 1.5, 1.6, 1.8, 2, 2.5, 3

螺距 (毫米) Spiral pitch (mm) 6 - 40

节距 (毫米) Rod pitch (mm) 5 - 30

网宽 (毫米) Belt width (mm) 200 - 5000

特殊规格可定制 / Special specifications are available

网带特点 / FEATURE

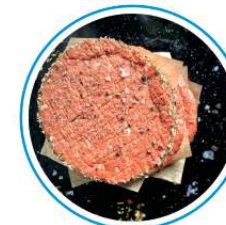
- 重量轻, 性价比高
- 开孔式结构适用于洗涤、清洁和烘干产品
- 通过定期更改螺旋缠绕方向, 可以避免网带向一个方向移动

- Light weight and cost-effective
- Open structure suitable for washing, cleaning and drying products
- Creep to one direction can be avoided by changing spiral winding direction with regular intervals

应用 / APPLICATION



降温
Cooling



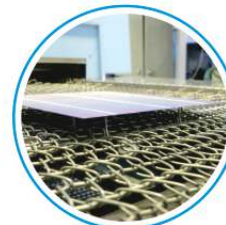
肉家禽海产品加工
Meat poultry
& seafood



食品加工
Food
Processing



速冻
Freezing



太阳能光伏
Solar